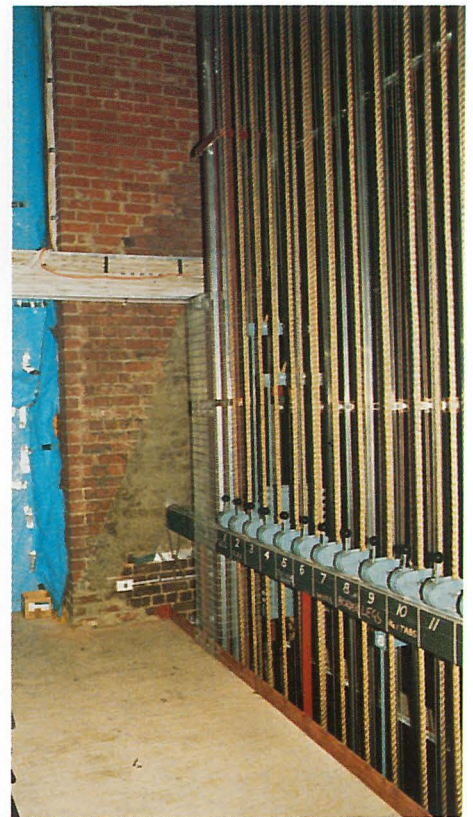




Redecorated proscenium restored to full height.

Proscenium rear wall from new P.Fly gallery. Rendered cement line sloping down from cable duct shows original roof line.



#### ADVERTISEMENT

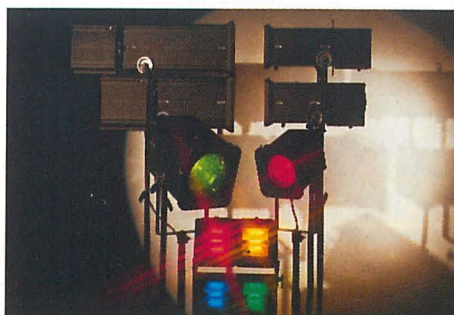
## New Crown Range takes a bow

Since the launch at Electrex '86 at the beginning of the year, the new Furse Crown range of advanced flood and spotlights have become hot property in theatre land. Designed specifically for the semi professional theatre and educational market, sales are now exceeding all expectations.

Crown Floodlights are available as single or multi compartment units of 500 or 1000W and are designed to project a high intensity even wash of light with a fixed beam angle.

The new Crown Spotlight range offers variable beam angles through adjustable lens systems. The Crown 1000PW, 1000PN, 2000PW and 2000PN profile units produce a hard edged beam which can be shaped by integral shutters or optional iris diaphragms. The 1000F and 2000F Fresnel units project a soft edged beam for general lighting purposes.

Furse offers a wide selection of permanent and portable dimmer racks in addition to control desks to suit every requirement.



The new Furse Crown range of advanced flood and spotlights.

The new Furse Theatre products brochure and comprehensive technical data pack is readily available on request.

## Low Cost Computerised Lighting Control

The new ADB-S20 theatre lighting control desk is now available in the UK from Crown House Furse Theatre Products of Nottingham.

Retailing from £2750.00 the S20 represents a real breakthrough in sophisticated theatre lighting control.



The ADB S20 theatre lighting control desk and colour monitor.

All the electronics and programmable software are contained in a single, compact console and the complete system is supplied with a colour monitor (RGB, 1600 or 2000 characters) and remote mouse control cursor. Specifically designed for repertory and touring theatre companies, TV and video studios, variety shows, clubs and discotheques, the new S20 is capable of controlling up to 120 independent lighting circuits and offers 250 lighting cue memories, one time-delay linear cross-fade (manual and automatic) in addition to automatic sorting on memory and 12 time-delay play-back registers.

The S20 is the latest addition to the comprehensive ADB range of theatre and TV studio lighting and control equipment available from Furse of Nottingham.

A full colour leaflet for the ADB-S20 is available on request.

## Special Effects by Rosco

When it comes to adding the finishing touches to your next theatre production, Rosco designer products can make all the difference. For dramatic impact, no other company, can offer a better choice of special effects products. These include colour filters, gels, dyes, gobos, glamé, paint, drapes, computer generated mural effects, floor finishes and accessories, fire retardant agents and textiles, fog/smoke machines, break-away bottles and even stage blood for the next horror production.

For further information and the latest price list speak to Crown House Furse Theatre Products, the newly appointed Rosco distributors in the East Midlands.



Rosco Supergel colour filters are available in over 80 colours in sheet or roll form.

Crown House Furse Theatre Products Wilford Rd.  
Nottingham NG2 1EB UK Tel: (0602) 863 471  
Telex: 377065 FAX Gp. 3 (0602) 860538