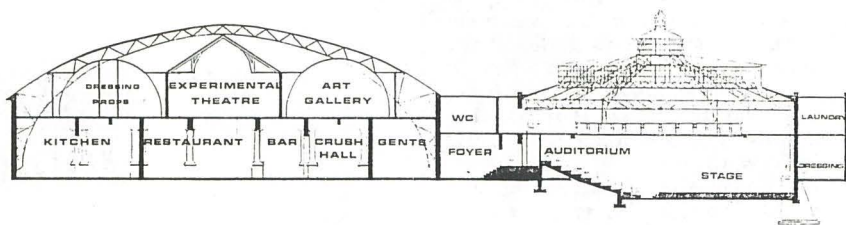


years and have their names engraved on one of the buildings pillars. Manim has also introduced a system whereby audiences underwrite productions for a share in the profits. This scheme was recently vindicated when a production of *Children of a Lesser God* was totally subscribed before opening. If such schemes continue to succeed and if the Market Theatre continues to offer internationally acclaimed productions, Manim's claim that The Market Theatre is heading for more prosperous times is surely justified, especially as such success appears to hold no danger for the artistic policy of the theatre. He says for example: 'I'd rather fail with a South African play than succeed with a British or American product. It would be a much more worthwhile way to go!'

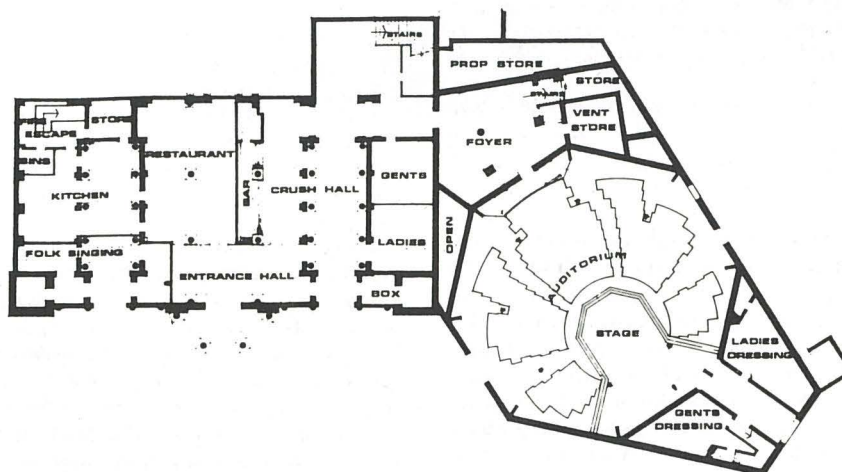
The three theatres which make up The Market Theatre complex, vary in size and design to meet the needs of different companies and different productions. The largest of the three venues is The Market Theatre itself, with a seating capacity of 520 people. It has flexible arena or thrust staging, raked seating in stalls and gallery and unrestricted sight lines from all seats in the house. The Market Theatre has no flying facilities, although in the past designers have suspended props. from the lighting grid overhead alongside lanterns and cycloramas. The present lighting system for the theatre consists of a Rank Strand Duet 11, 96 way central memory board with a backup fader wing pin matrix, through the dimmer control room which houses 72 dimmers in Rank Strand Permus Racks rated at 2½kw each (soon to be expanded to 96) to 90 outlets on the main grid, backstage barrels and dipboxes. This gives 100% patching facility in the Dimmer control room. The theatre's sound system consists of a Revox B77 reel to reel tape recorder, an Audio Specialist octave equaliser, a Cyclops Stereo 2 channel 200 watt amplifier and two Electrovoice PI 12/2 200 watt speakers (rms).

The studio theatre; Upstairs at the Market Theatre, does not have a permanent stage or

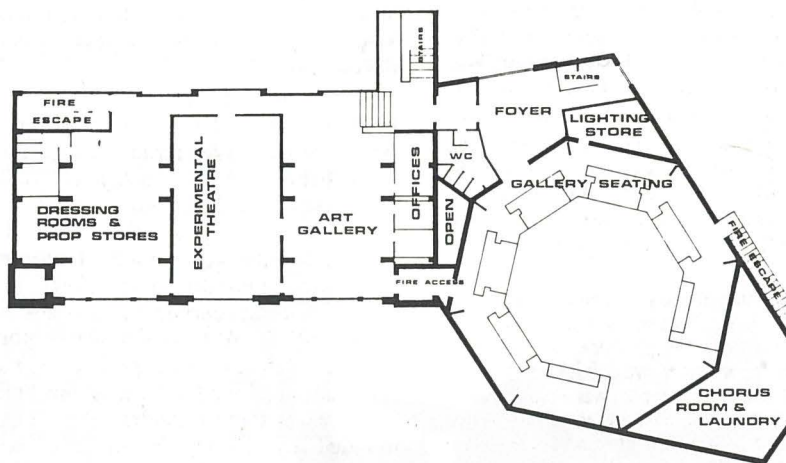


The Market Theatre Johannesburg

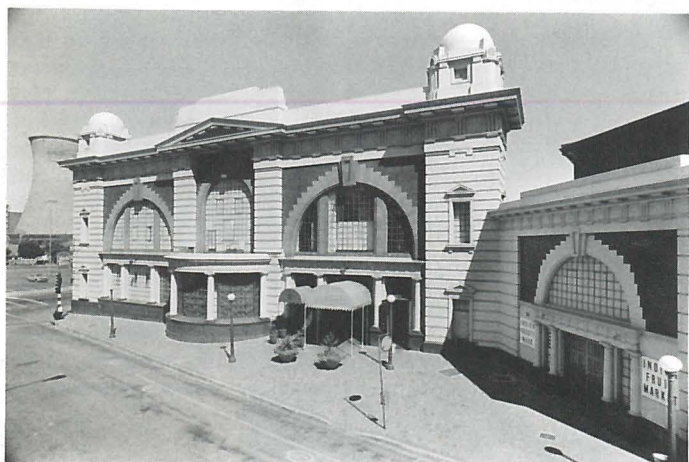
SECTION



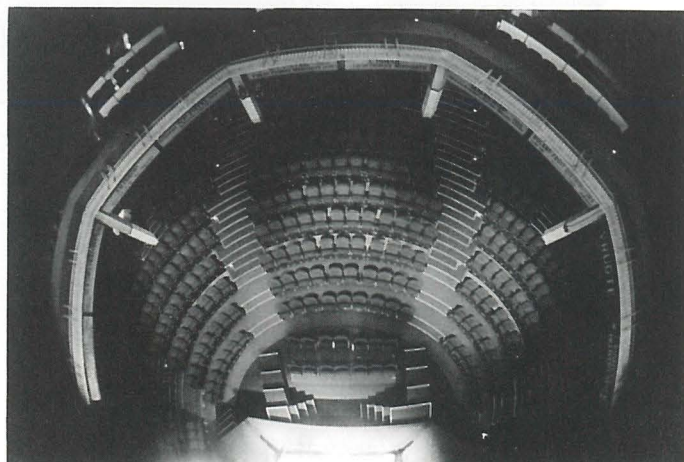
GROUND FLOOR PLAN



FIRST FLOOR PLAN



The eastern facade and entrance to the Market Theatre complex in Johannesburg



The auditorium of the Market Theatre, photographed from above. This theatre, which used to be the Indian Fruit Market, seats up to 520 people, including the gallery seats.