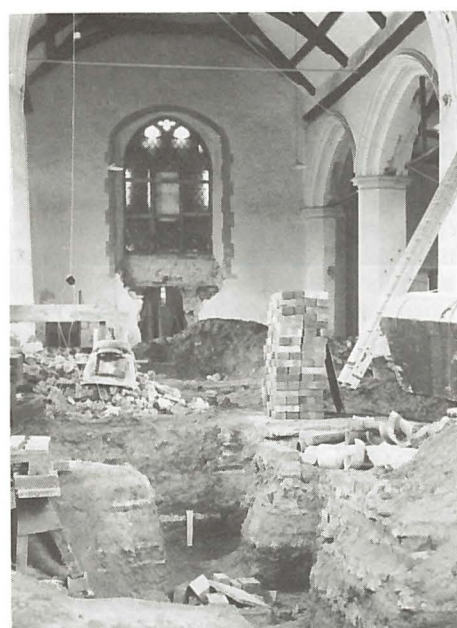




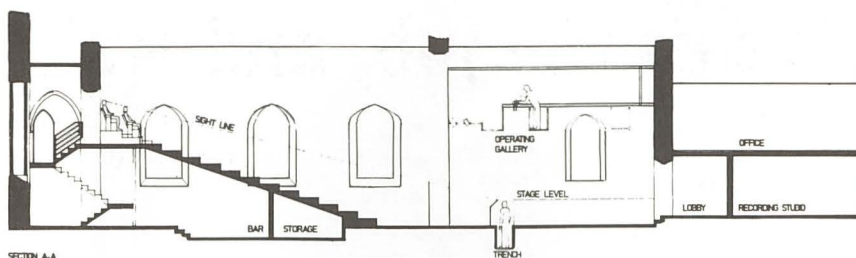
*Raked auditorium seating.*



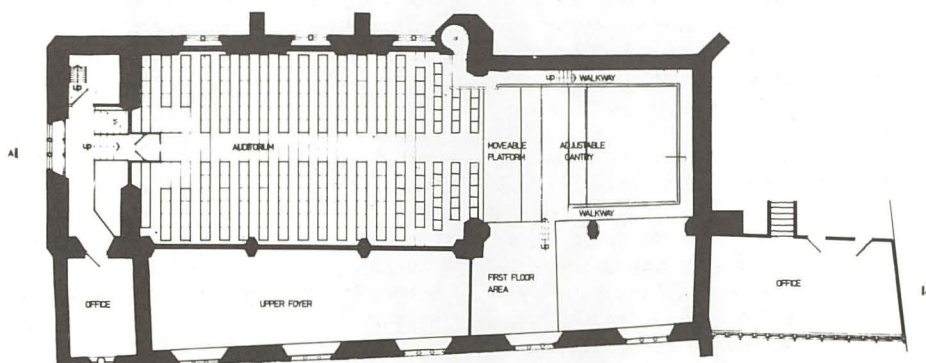
*Excavating the stage area gave the archaeologists a field day.*



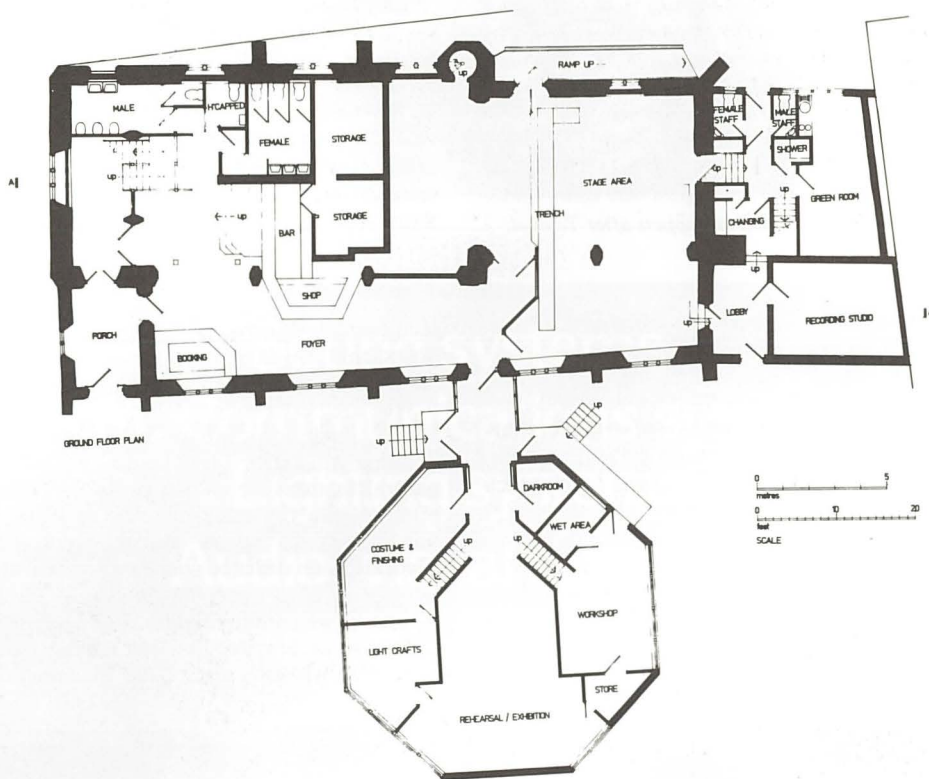
*Church into Puppet theatre.*



SECTION A-A



UPPER FLOOR PLAN



look alive from the Norwich inner ring road on which it is situated within easy walking distance of car parks.

Outline planning permission has been obtained for the extension of the foyer to a new building for studio accommodation on the adjoining church-yard. However, whilst it has always been recognised that the 'puppet centre' activities are integral to the whole operation, and that it is very desirable for the company's creative work

to be done on site, a decision was made to concentrate all efforts on the theatre first and to rent alternative temporary premises elsewhere in Norwich. Once the theatre is open, our fund raising efforts will be directed towards achieving this final phase in order to provide the full facilities required to operate the theatre efficiently, to provide exhibition space, making the whole a very worthwhile attraction for visitors between performances, and to run